

OSM for almost every phone gvSIG Mini

proDEVELOP
Integración de tecnologías

Javi Carrasco
Alberto Romeu
Miguel Montesinos



What is it?

- Map Viewer with GPS functions
- For mobile phones
- Free and Libre (GPL)
- Not an official gvSIG project
- Intended for non professionals
- Uses online services

What does it look like?



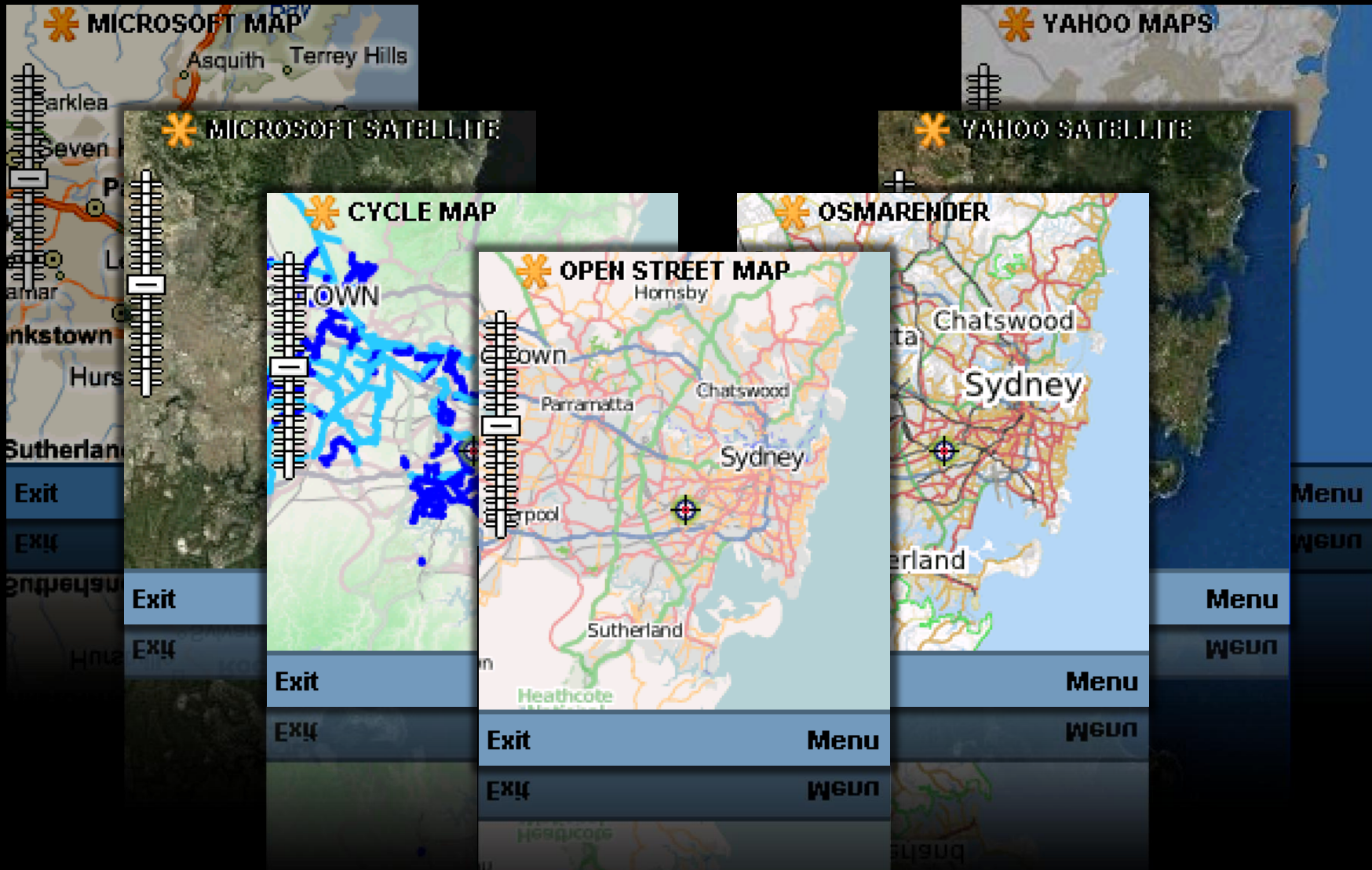
Who is doing it?



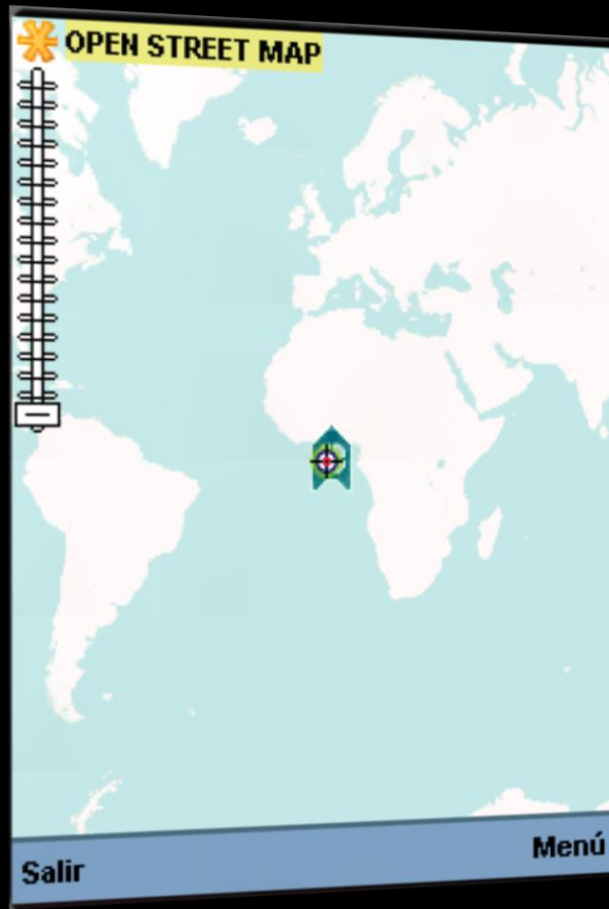
- Spanish company
- 16 years GIS experience
- 70 + employees
- Member of gvSIG Project Steering Committee
- High focus on FOSS4G: Victoria, Cape Town, Sydney
- Members of gvSIG Association
- Members of Sextante Geospatial Services

What are its features?

Map viewer

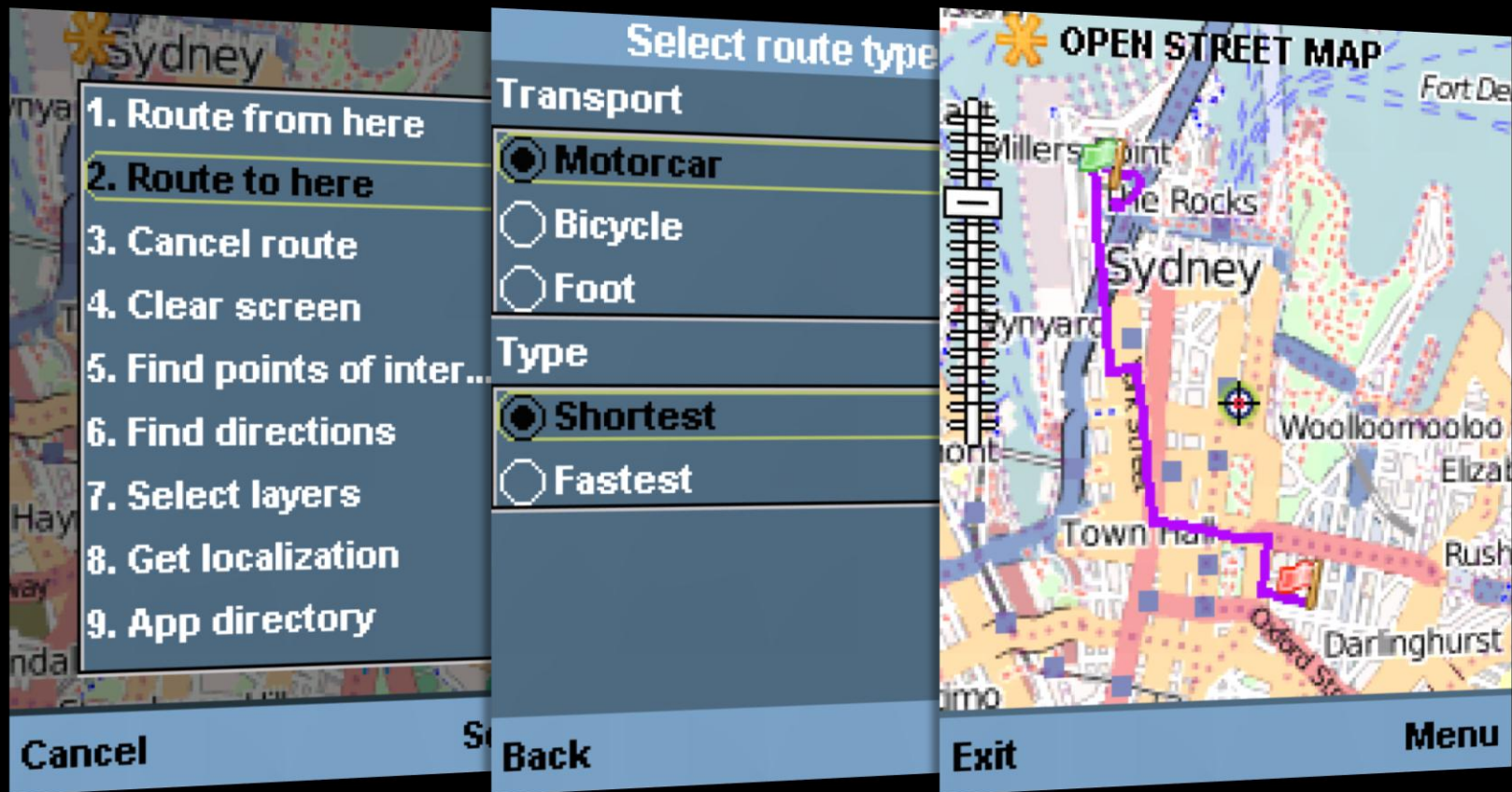


GPS Positioning



- See my location
- Search close POIs
- Use position for routes

Route finder (YOURS)



Address search (Name Finder)

Name finder

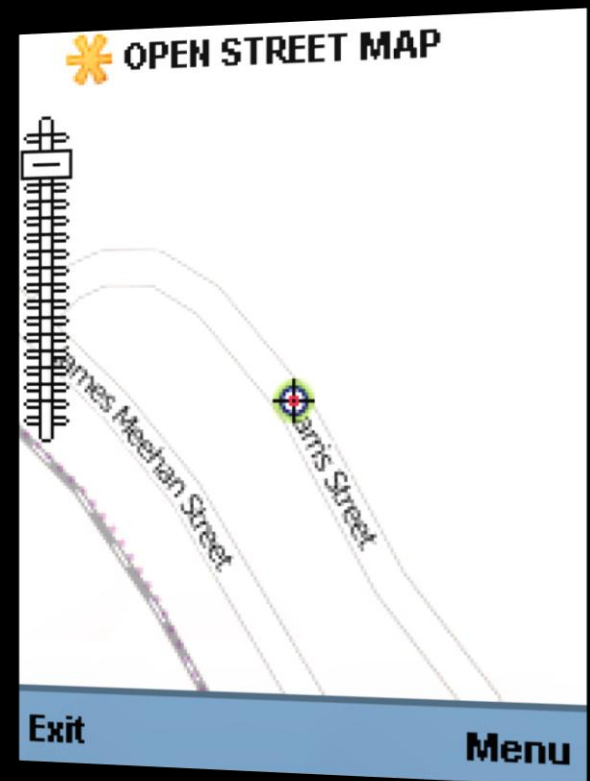
Street or place:
Harris

City:
Sydney

State:
Australia

Back **Menu**

- Harris, Sydney, Australia**
- Harris Street**
Australia, NSW, New South Wales
 - Harris Street
road Harris Street found abo...
 - Harris Place
street Harris Place found ab...
 - Harris Street
street Harris Street found le...
 - Harris Street
street Harris Street found a
- Back** **Menu**



POI Search (Name Finder)

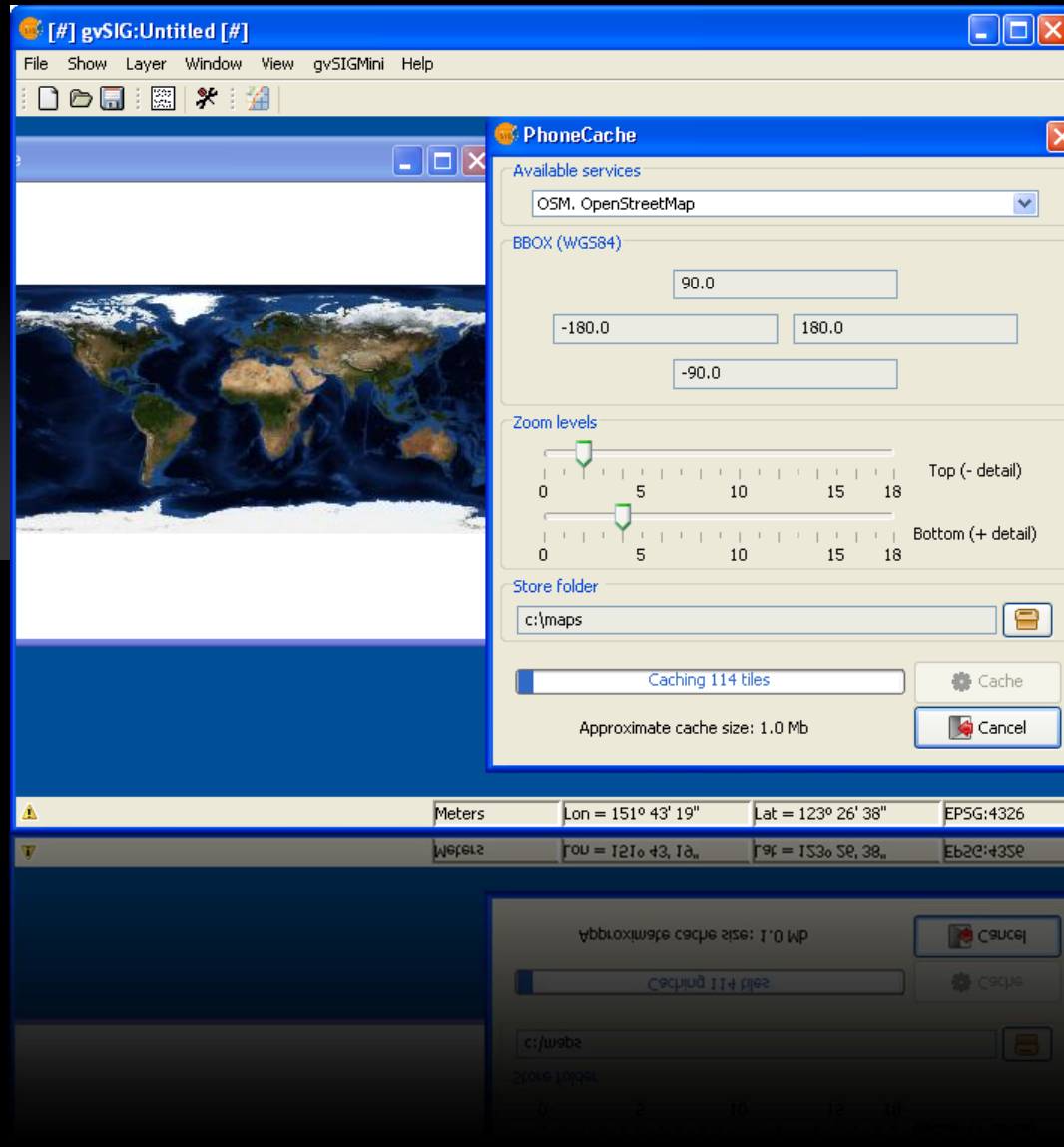
The image displays three sequential screenshots of a mobile application interface for a Point of Interest (POI) search. The interface is designed for touch interaction, featuring a list of search results and a map view.

Screen 1: Search Configuration
The top section is titled "Name finder". Below the title, there is a checked checkbox labeled "Near from map center". Underneath, the text "Point of interest:" is followed by a text input field containing the word "hotel". At the bottom of the screen, there are two buttons: "Back" on the left and "Menu" on the right.

Screen 2: Search Results
The top section shows the search criteria: "hotel near -33.87,151.20". Below this, a list of search results is displayed, including "Central Park Hotel", "Park Hotel found about 1km s", "Edinburgh Castle Hotel", "pub Edinburgh Castle Hotel i...", "Star Hotel", "pub Star Hotel in Australia, N...", "Sir John Young Hotel", "pub Sir John Young Hotel fo...", "Criterion Hotel", and "pub Criterion Hotel found le". At the bottom, there are "Back" and "Menu" buttons.

Screen 3: Map View
The top section shows a map from "OPEN STREET MAP" with several red location markers. Labeled streets include "Wemyss Street", "Martin Place", "King Street", "City Centre", "Town Hall", "Museum", and "College Street". A green location marker is highlighted. At the bottom, there are "Exit" and "Menu" buttons.

Phone Cache (Tiles downloader)



What are the Requirements?

- Standard phones
 - Java CLDC 1.1/MIDP 2.0 enabled phone
 - (Optional) GPS and JSR 179
 - (Optional) Network connectivity
 - (Optional) JSR 75: Filesystem access
- Android
 - (Optional) Network connectivity
 - (Optional) GPS

How is it being done?

- Tiles + vector routes + POIs
- LWUIT for enhanced user experience
- Multithread
- Persistent cache
- Based in OSM services
- Supported SRS: "EPSG:4*" "EPSG:230*" "EPSG:326*" "EPSG:327*" "EPSG:275*" "EPSG:27700"

Where to get it?

- From PC

gvsigmini.org

- From phone

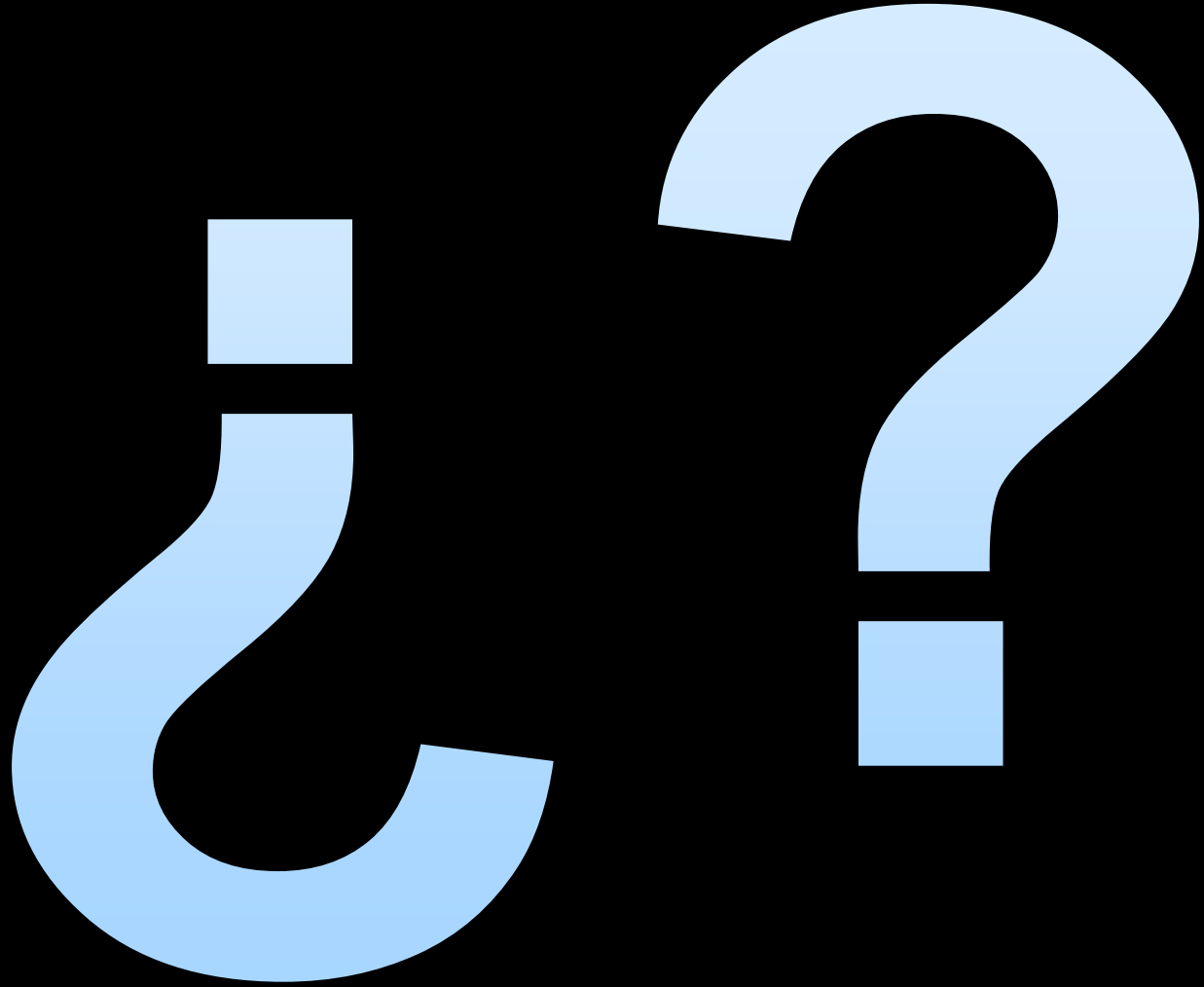
m.gvsigmini.org

What's next?

- Personal POIs storage
- Tracklogs and waypoints storage
- Disconnected address search
- Integration with social applications
- Unify Android and CLDC code

Collaborations are wellcome

Video



Thank You

jcarrasco@prodevelop.es

