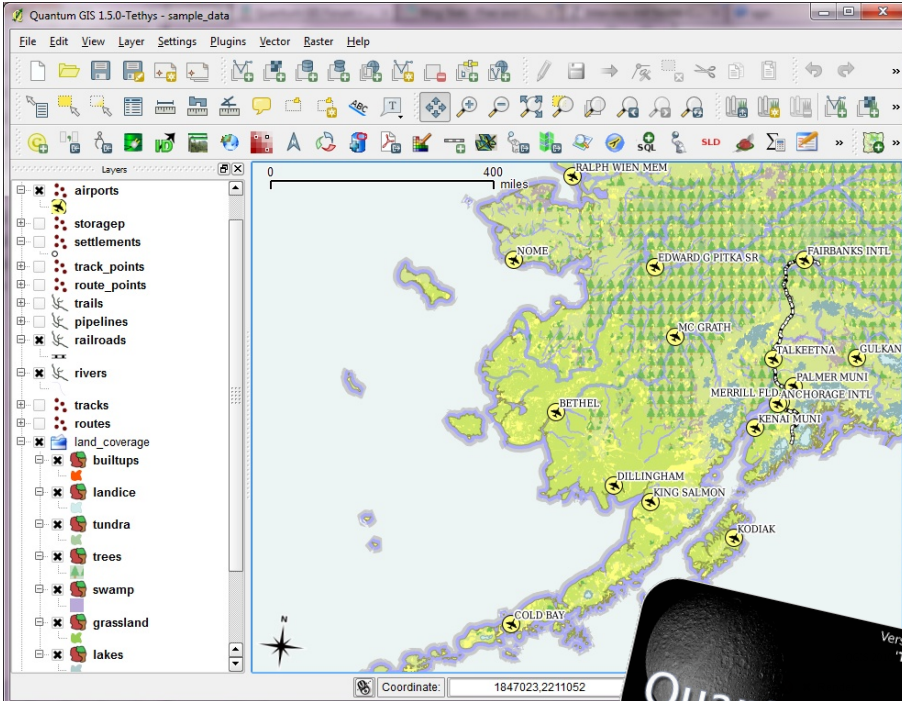




Quantum GIS

Open Source Geographical Information System - <http://qgis.org>

Tethys



Core Features

- Raster and vector support
- GRASS Integration
- Extensible plugin architecture
- Digitizing tools
- Print composer
- Python language bindings
- OGC support (WMS, WFS)
- Overview panel
- Spatial bookmarks
- Identify/Select features
- Edit/View attributes
- Feature labeling
- On the fly projection

Plugins

- GRASS
- fTools (vector)
- GdalTools (raster)
- GPS tools
- Delimited text import
- PostGIS import tool, manager & query editor
- SpatiaLite manager
- North arrow & Scale bar
- Raster georeferencing tool
- OpenLayers plugin
- and many others

Multi-platform

- GNU/Linux
- Unix
- Mac OS X
- Windows

Things you can do with QGIS...

- View, edit and create a variety of vector formats, including Shapefiles, GRASS vectors, data in PostgreSQL/PostGIS, SpatiaLite, ...
- View rasters including TIFF, ERDAS Img., GRASS, ...
- Create customised plugins using Python or C++.
- Create custom GIS enabled applications using Python or C++ and the QGIS core library.
- Compile a map layout using the print composer

Import and Export Data

- Import delimited text data and view it as a layer
- Import shapefiles into PostgreSQL/PostGIS
- Download and display tracks, routes, and waypoints from your GPS
- Import OGC WMS and WFS layers
- Create features in QGIS and upload them to your GPS

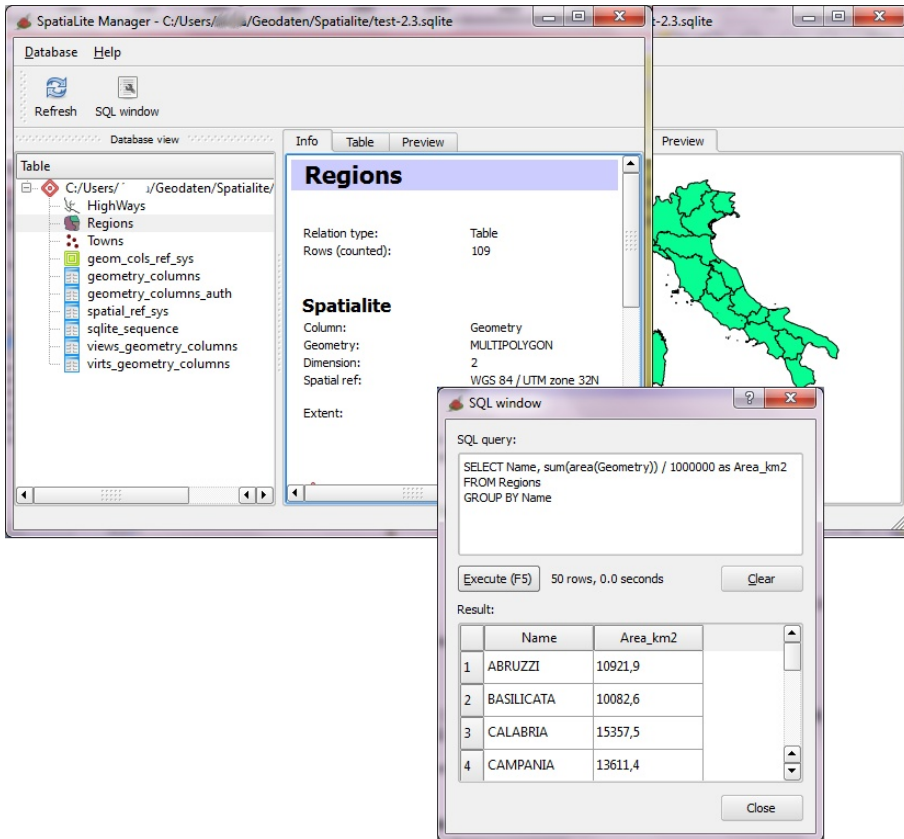
QGIS is international!

With users and developers all over the world, someone is sure to have the answer to your question. Volunteers have translated QGIS into more than 30 languages including French, Dutch, Russian, Japanese, Chinese, Indonesian, Slovak, Italian, German and Portuguese!



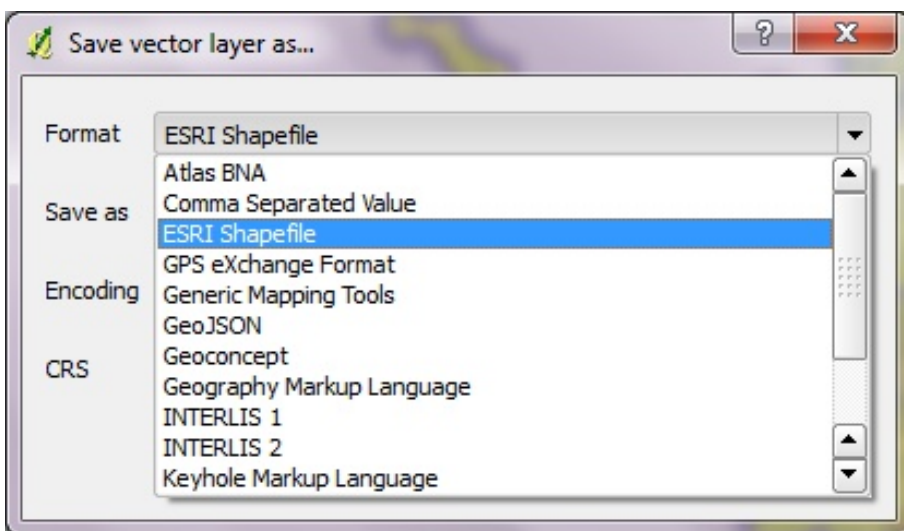
NEW SpatialLite Manager

SpatialLite Manager enables you to view and query the contents of your SpatialLite databases.



Extended Export Functionality

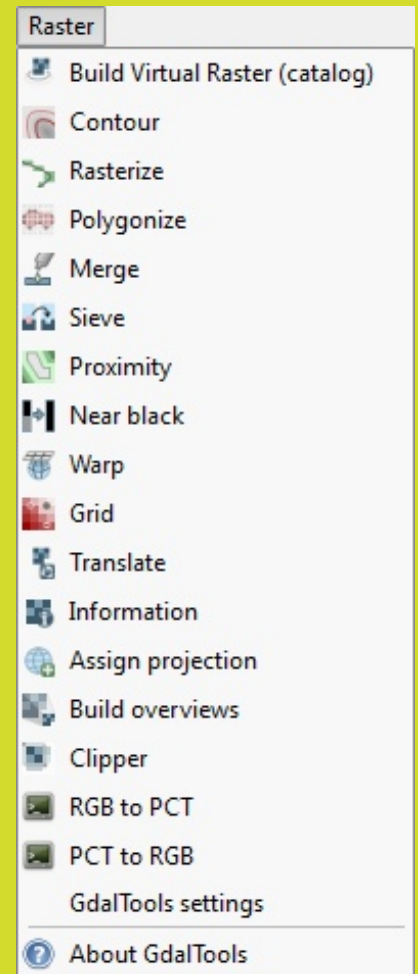
Besides exporting layers as Shapefiles, you can now choose from a wide variety of formats including the popular GML and KML formats.



Project Chairman: Gary Sherman
Email: info@qgis.org
Home Website: <http://qgis.org>
Download Website: <http://download.qgis.org>
Wiki Website: <http://qgis.org/wiki>
Forum Website: <http://forum.qgis.org>
IRC: #qgis on freenode.net

GdalTools

GdalTools offer new raster functions previously only available via GRASS or on command line level.



GRASS Toolbox

QGIS and GRASS work together. New GRASS modules can be added easily.

Help and Support

QGIS is supported by an enthusiastic user and developer community. Several active mailing lists, an active forum and a friendly internet relay chat channel provide ready access to help and advice directly from other users and developers. Commercial development is also available (visit the Quantum GIS home page for details).